

# AOMC

## Carbon Offset Scheme for Historic Vehicles



# AOMC Carbon Offset Scheme

The Association Of Motoring Clubs (AOMC), through Greenfleet, is proud to offer a new initiative where motoring enthusiasts can support green programs in Australia through a carbon offset scheme.

Your support of this program demonstrates the enthusiast movements commitment to both the environment and the preservation of moveable cultural heritage and **allows the AOMC to advocate that the environment and our heritage fleet can exist in harmony.**



## To play your part

- Nominate how many kilometres you will travel each year in your historic vehicle(s).
- Pay a small annual fee to offset the carbon generated.
  - \$18 for 3000 km per year, or
  - \$36 for 6000 km per year
- It's that simple.

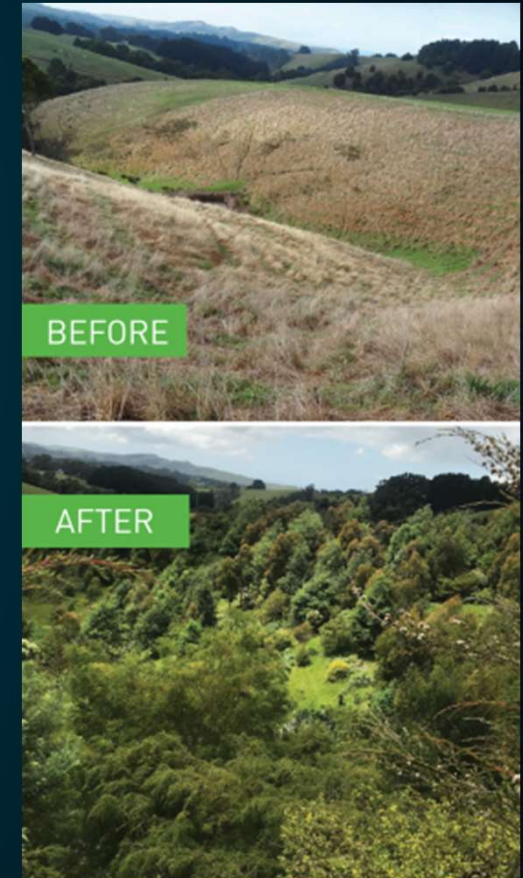
## Who is Greenfleet?

Greenfleet invests funds by planting and maintaining legally protected, biodiverse forests and since 1997 Greenfleet has planted over 10 million trees creating 500 native forests and your support enables this fabulous work to continue and thrive.

All donations to Greenfleet are tax deductible and you will also receive a certificate in recognition of your support.

# About Greenfleet

- Leading Australian not-for-profit environmental organisation protecting our climate by restoring forests.
- Greenfleet plant native biodiverse forests in Australia and New Zealand to offset carbon emissions to help fight the impacts of climate change.
- Forests capture carbon emissions to protect our climate, address critical deforestation reduce soil erosion, improve water quality and restore habitat for wildlife including many endangered species.
- Greenfleet forests are legally protected for up to 100 years.



Whitehurst in South Gippsland VIC  
Boonwurrung Country

# Greenfleet's impact over 25 years



**10+**  
million trees  
planted



**500**  
native forests  
created



**4+**  
million tonnes of  
carbon offset

## How we will work together

Greenfleet gives the AOMC and its supporter organisations a practical, tangible way to reduce their carbon footprint and take climate action.

By offsetting your carbon emissions with Greenfleet, you're funding biodiverse native forest revegetation in Australia. Native trees are planted, restoring native ecosystems and creating critical habitat for our precious wildlife, and your carbon emissions are sequestered.

- Offset up to 3,000 kms of driving per year in your historic car for \$18 pa
- Offset up to 6,000 kms of driving per year in your historic car for \$36 pa

# Start on the AOMC Website

Navigate to the  
Carbon Offset page



## AOMC Carbon Offset Program

The Association of Motoring Clubs (AOMC), in partnership with Greenfleet, is proud to announce a new initiative where motoring enthusiasts can support green programs in Australia through a carbon offset scheme.

Your support of this program demonstrates the enthusiast movements commitment to both the environment and the preservation of moveable cultural heritage and allows the AOMC to advocate that the environment and our heritage fleet can exist in harmony.



DOWNLOAD FLYER

To play your part:

- Nominate how many kilometres you will travel each year in your historic vehicle(s).
- Pay a small annual fee to offset the carbon generated.
- It's that simple.

GreenFleet invests funds by planting and maintaining legally protected, biodiverse forests and since 1997 GreenFleet has planted over 10 million trees creating 500 native forests and your support enables this fabulous work to continue and thrive.

All donations to Greenfleet are tax deductible and you will also receive a certificate in recognition of your support.

*Thank you for helping to grow climate hope by offsetting your historic vehicle's carbon emissions today.*

To be part of this exciting new program please submit the form below. Please also identify the Car Club that is supporting you in this initiative

Your Name \*

Your Car Club \*

Submit



# You will transfer to the AOMC Carbon Offset landing page on the Greenfleet website

**Step 1:** On the AOMC Carbon Offset landing page click on the buttons to offset 3,000kms or 6,000 kms per year of driving.

Offset your historic vehicle emissions

Offset your emissions to grow climate hope

It has never been more important to act on climate change and historic vehicle enthusiasts can now balance their love of heritage vehicles with genuine care for the planet.

The Association Of Motoring Clubs (AOMC) is working with Greenfleet who is leading the way, planting biodiverse native forests to capture carbon emissions and help fight the impacts of climate change.

Greenfleet has been restoring native forests for 25 years, planting over 10 million trees and creating more than 500 forests, which are legally protected for up to 100 years. This work conserves biodiversity and restores habitat for wildlife, including many endangered species.

Working with Greenfleet, the AOMC has put together a simple way for historic vehicle owners to offset their carbon emissions. For the historic vehicle movement to thrive in the future and attract new enthusiasts, we need to care about the planet as much as we care about our vehicles. Offsetting our carbon emissions is a practical way we can do this.

Offset your carbon emissions now

Choose the appropriate level of offset for your historic vehicle usage. You can also add an offset for your daily drive or to offset your entire carbon footprint for a year. Once selected, you will be taken through to your Cart, where you can checkout as a guest or create an account with Greenfleet. If you create an account, once you've activated your account via email, please click on the Cart button at the top right of the website to enter your payment details to complete your offset. If you do not receive an account activation email, please check your email junk folder. Thank you for growing climate hope with Greenfleet.

Offset up to 3,000kms of driving per year in your historic car \$18

Offset up to 6,000kms of driving per year in your historic car \$36

\$18 or \$36

**Step 2:** Your offset is added to your shopping cart. Click Proceed to Payment.

Shopping cart

YOU'RE TAKING PRACTICAL CLIMATE ACTION AND GROWING HOPE

Item	Quantity	Unit Price
Offset up to 3,000kms of driving per year in your historic car	1	AS\$18.00

Send me a free sticker

TOTAL AS\$18.00

I would like to add a donation

\$30  \$50  \$100  Other amount

Is this a gift?

Update Proceed to payment

**Step 3:** Check out as a guest or create an account, then enter your details. Choose "Association Of Motoring Clubs" in the "How did you hear about us" dropdown.

Check out as a guest

Check out as a guest

Create an account

Create an account

Log in to your account

Log in to account

Supporter details

How did you hear about us?

How did you hear about us?

If you choose to create an account first then, to finish, go to the shopping cart and proceed to payment of the AOMC Carbon Offset Program

**Step 4:** Enter your payment details. Once processed you will receive a Tax Receipt and offset certificate.

Confirm your payment details

Credit card PayPal BPAY®

Order Summary

Continue to order

## Why is the AOMC doing this?

The AOMC understands that there is community concern about the environment, and all too often hears the conversation refer to “gas guzzlers” and the need to eliminate ALL old cars from the road

The AOMC wants a voice to join that conversation, and you can help us by demonstrating your concern for the environment by building evidence that the environment and our heritage fleet can exist in harmony.

Greenfleet can help us tell that story



# Storytelling and content



Greenfleet stories can connect AOMC members to the impact they're making. We have extensive image galleries and content available for your use. Please see some examples below and on the following pages:

- [A snapshot of Greenfleet](#): As an environmental not-for-profit, Greenfleet is focused on protecting our climate by restoring our forests. Since 1997, we have planted more than 500 forests with over 10 million trees across Australia and New Zealand.
- [The role of trees in the water cycle](#): Trees are remarkable at sequestering carbon from the atmosphere through the process of photosynthesis, but they also play a vital role in the water cycle and improving water quality.
- [Why Climate Action is Good for Your Health](#): As the climate crisis continues, people the world over are also dealing with the repercussions of a global pandemic. While we know that taking climate action contributes to a healthy planet, there are ways that climate action can also contribute to healthier people and communities.



## Impact stories: koala conservation

### How taking climate action builds koala habitat:

Greenfleet has been building habitat for koalas and other wildlife for nearly a quarter of a century through our reforestation work.

In 2021 we planted 120 hectares of koala habitat. With your help we will continue to restore even more this year and beyond.



## Impact stories: our forests

### Cherry Gully QLD & Cherry Avon, QLD

Located north-east of Brisbane, Greenfleet will restore over 250 hectares of native ecosystem across these two properties, providing extensive habitat for koalas along the Cherry Gully riparian corridor. The native restoration along Cherry Gully, Ivory Creek and Brisbane River Catchment will improve water quality and deliver other far reaching environmental benefits.



### Glendalough, VIC

In the rolling hills of South Gippsland on Boon Wurrung Country, this cleared 240-hectare property will be returned to native ecosystems. The property will provide an important vegetation link for the critically important Strzelecki Koalas and habitat for native birds such as the Yellow-faced Honeyeater and Grey Fantail.



# Thank you!

For taking action on climate change and helping to grow climate hope with us.

Greenfleet look forward to working with you and our community of historic vehicle enthusiasts.

Please join the scheme for just \$18 or \$36 pa and help the AOMC advocate on your behalf with evidence that the environment and our heritage fleet can exist in harmony





# Appendix:

## Forest monitoring



- Greenfleet forests are legally protected on-title for up to 100 years from land clearing, harvesting and house construction, even if the land is sold.
- Established Australian native forests are resilient and can survive dry periods, fire and pests. If natural disasters or browsing by animals such as rabbits cause tree damage, we replace them or replant in another area.
- Greenfleet always plants a range of locally appropriate species to provide the foundation for a complex, resilient forest to emerge and thrive over 100 years.
- Our planting plans choose appropriate local canopy and understory species for each bioregion, based on government-approved best practice guidelines and referencing the local landscape.
- We return regularly during the establishment phase to check tree health and growth and monitor emerging forest complexity, such as birdlife. We also use satellite imagery and drone footage for forest monitoring.



# Appendix:

## Offset Verification



Greenfleet offsets are fully verified across several phases:

- CSIRO: Greenfleet uses the Full Carbon Accounting Model (FullCAM), developed by CSIRO to measure the carbon uptake at each forest planting site. This approach is approved by the Australian Government Department of the Environment.
- EY (formerly Ernst & Young): Verify Greenfleet's carbon estate annually.
- Pitcher Partners: Independently audit Greenfleet's work. Carbon on title agreements are authorised by each landholder.
- Aboriginal Carbon Foundation: Verify all projects with social and cultural benefits identified by Traditional Owners.

*Greenfleet is a registered environmental charity with Deductible Gift Recipient (DGR) status held by Greenfleet Trust (ABN 86 693 237 685)*